

4310i Installation Manual

Updated 10 November 2009

1

Incorporating OmniBridge & Matrix Vehicle Tracking
www.mixtelematics.com

The FM 4310i Package

The standard FM Protector kit includes

- FM 4310i unit
- FM 4310i standard harness with speaker
- 1 Remote control unit



FM 4310i unit



FM 4310i standard harness with speaker



Remote control unit

Quick Reference Guide

| |
|--|
| INSTALLATION |
| 1. Position the 4310i in your vehicle |
| 2. Verify and test the chosen position |
| 3. Securing the 4310i unit |
| 4. Electrical connection of the unit |
| 5. Finishing off the Installation |
| ONLINE USER and UNIT REGISTRATION |
| 1. Registering a new user with a new vehicle (new FM 4310i unit) |
| 2. Existing user adding an additional vehicle (additional FM 4310i unit) |
| FINAL CHECKS |
| INSTALLATION FAQs |
| TROUBLE-SHOOT CHARTS |
| REMOTE CONTROL REFERENCE GUIDE |

Installation of the FM 4310i unit

1. Position the 4310i unit in your vehicle

- 1.1. The FM 4310i unit must be installed horizontally – or as close to horizontal as possible. A few degrees of tilt are acceptable.
- 1.2. The unit should preferably be mounted somewhere under the dashboard, but other positions such as under the centre console or under the front seats may also work. In hatchback models, the sides of the rear

luggage compartment may contain a space designed to accommodate entertainment and navigational equipment which would serve as an ideal location for the FM 4310i unit. The following positioning guidelines should be adhered to:

- 1.2.1. Avoid mounting the unit directly underneath steel or metal structures such as dashboard strengtheners, steering columns or large electronic modules
- 1.2.2. Ideally, the FM 4310i unit should have an unobstructed (not obstructed by metal – plastic is acceptable) 'view' to a large portion of the 'sky' through the windows of the vehicle. The windscreen or rear window is best for this purpose)
- 1.2.3. When mounting the unit under the dashboard, try to position the unit as high up as possible – in other words, as close to the top surface of the dashboard as possible.
- 1.2.4. Exposure to direct sunlight or positions of extreme ambient heat should be avoided as the FM 4310i safety features will temporarily shut the unit down under extreme heat conditions.
- 1.3. The GSM and GPS antennae are built into the FM 4310i unit. Although both antennae were designed for 'indoor' use, for optimum operation the mounting position of the unit requires some special consideration as described below.
- 1.4. The GPS/GSM antennae must face 'upwards' – this means the plastic mounting tags must be at the bottom and the 'serial number sticker' must be at the top. *The GSM antenna is to be mounted further than 20cm away from the human body under normal operating conditions.*
- 1.5. Once you are satisfied that you have found an ideal mounting position, follow the instructions below to verify and test the chosen position, by doing an initial electrical self-test to verify the suitability of the installation position.

2. Verify and test the chosen position

No special test equipment is needed for installation. The FM 4310i harness has a built-in speaker which will assist you through the self-test process. To achieve this, the unit can be switched to "Diagnostic Mode" during installation which will play the relevant voice prompts to assist you. The following steps are recommended:

- 2.1. Move the vehicle into the open air, ideally a short distance away from buildings, overhangs, large clusters of trees or other structures that may obscure direct signals from GPS satellites and GSM towers.
- 2.2. Before the unit is secured, power up the unit. **Tip:** A temporary harness using 12v from the vehicle's cigarette lighter is ideal for this purpose.
- 2.3. After a short pause, the FM 4310i unit will 'wake up'. switch the FM 4310i into Diagnostic Mode by pressing the Shift (up arrow) button on the Remote Control Unit followed by the Alert (orange) button repeatedly until 'Diagnostic Enabled' is heard. (Also refer to Troubleshooting Chart 1 and 2 below)
- 2.4. Once you are in Diagnostics mode, place the unit into Self-test Mode by pushing the Shift (up arrow) button followed by the OK button. A Voice Prompt will ask you to confirm by pushing the OK button again – do so when prompted.
- 2.5. The unit is now in Self-test mode. For the time being, disregard all the Voice Prompts that follow and wait for the FM 4310i to report the number of satellites visible and GSM signal strength. This happens at the end of the Self-test routine and is repeated every few seconds until Self-test mode is exited.
- 2.6. With the vehicle in the location you have selected:
 - 2.6.1. The unit's GPS receiver should acquire lock within a few minutes (< 3 minutes typically but a 'cold' start may take a little longer)
 - 2.6.2. The unit's GPS receiver should see at least five or more satellites within a few minutes.
 - 2.6.3. The unit's GSM module should have a GSM signal strength of ideally more than 60%, but not less than 40% to 50%. (This is obviously also dependant on the general GSM signal strength in the area and distance from the closest GSM service provider tower)

3

Updated 10 November 2009

- 2.7. If these conditions cannot be met, try moving the FM 4310i unit to a more optimal position. If the unit is left in Self-test mode during the search for an optimal position, ensure that a minute or two is allowed in each new position for the self-test software to acquire the new data.
 - 2.7.1. If the voice prompt “This operation is not allowed in this mode” is heard, it means that the unit is considered to be in trip. This means that either the ignition is switched on, or the unit is detecting movement. If this happens, Switch ignition off and leave unit un-disturbed for about 2 minutes, for unit to get out of trip, before you try again
 - 2.7.2. If you are enabling a unit for the first time in a new region, there may be additional steps in the registration process that you would need to follow. For this, please contact your regional dealer for more information.
- 2.8. Once you are satisfied that the optimal mounting position for the FM 4310i unit has been found, you can exit the Self-test mode by pushing the Shift (up arrow) button followed by the OK button. A Voice Prompt will say “Self-test Completed”
- 2.9. A comprehensive self-test is to be completed once you have secured the unit and connected it electronically. See step number 7 (Finishing off the Installation) below.
- 2.10. You are now ready to secure your FM 4310i unit

3. Securing the FM 4310i unit

- 3.1. Mounting of the unit can be done with strong double sided adhesive tape, cable ties, nuts & bolts or rubber car body putty.
- 3.2. Take care not to use any metal clamps or plates covering the top (sticker side) of the FM 4310i to secure the unit as these will obstruct the GSM and/or GSP signals.
- 3.3. The unit should not be left loose under the dashboard – It will rattle and may fail due to excessive vibration, and/or problems may be experienced with the accuracy of the built-in accelerometer.
- 3.4. If any sticky substances are used to mount the unit, and the top of the box (sticker side) is stuck to the bottom of a non-metal surface in the vehicle (never stick this side to a metal surface), the sticker must be removed to prevent future sticker adhesion failure that may in turn lead to the unit becoming loose. If the sticker is removed, it should be re-stuck to the bottom of the unit for easy future reference and identification
- 3.5. The unit can also be securely ‘jammed’ into a non-metal tight corner using a suitable rubber foam wrapping to prevent slippage & rattling. However, for the accelerometer to work correctly during crash-detection, the unit must be firmly secured, especially in the fore-aft axis of the vehicle.

4. Electrical Connection of the FM 4310i unit

In order to minimise interference with the other electrical systems of the vehicle, the FM 4310i was designed for a simple two-wire (+/- 12V) installation only. Correctly installed, the FM 4310i should not affect the warranty of the vehicle but installers should consult with the appropriate vehicle dealers in this regard.

The following guidelines are recommended for the electrical installation

- 4.1. The 12V connection must be:
 - 4.1.1. Connected to **permanently ‘live’ wires**, unaffected by ignition, courtesy light switches etc. Be careful to ensure selection of a +12V line that the CANBUS or other systems **do not** switch off after a while. (This could happen even after an hour or more).
 - 4.1.2. On the ‘fused’ size of the fuse box.
 - 4.1.3. Selected from a +12V power supply that is intended for auxiliary equipment.
 - 4.1.4. A Solid ground should be used. At the closest point connected to the body of the car.

- 4.1.5. Soldered, crimped or plugged in. (Crimping should be avoided wherever possible as a poor crimp can damage the vehicle wires)
- 4.1.6. Insulated in the same style and manner as the rest of the car harness. (If cloth tape is used in the harness, then do the same for FM 4310i wires etc)
- 4.2. The +/- 12V connection must **NOT** be:
 - 4.2.1. Done in such a way that existing vehicle wires are cut. Where splicing is required, this should be done in an approved manner. (Stripping the insulation and soldering onto the bare copper is in most cases acceptable, provided that adequate insulation is re-applied afterwards – such as heat shrink sleeving and/or automotive approved insulation tape)
 - 4.2.2. Connected to any wires feeding any safety-critical vehicle devices such as Airbags, ABS, Instrument Clusters, Diagnostic Plugs or similar systems.
 - 4.2.3. Connected to any courtesy lights, cubby-hole lights or any door operated lights that switch off after a while.
 - 4.2.4. Spliced into completely wrapped, or sealed, harnesses.
 - 4.2.5. Connected by twisting wires together only. Such wires must be soldered or crimped. Also do not use any non-automotive connector blocks for this purpose.
- 4.3. The FM 4310i wires are all black for security reasons. A very fine white print on the end of the two connecting wires of the harness identifies the positive and ground wires respectively.
- 4.4. Care must be taken not to damage adjacent wires when working with harnesses or bundles of wires. This is especially important when using side cutters, stripping knives, soldering irons or heat guns.
- 4.5. The FM 4310i harness can be cut shorter but take care not to cut it so short as to eliminate the in-line fuse unit.
- 4.6. The mounting position of the Voice Prompt Speaker Box attached to the FM 4310i is not critical as Voice Prompts are mainly used for diagnostic and installation procedures. However, the following guidelines should be followed:
 - 4.6.1. If the Speaker can be mounted in a manner that would make it audible to the driver once the installation is complete, this would be preferable
 - 4.6.2. In certain circumstances, the positioning of the Speaker may be made more flexible by cutting the cable ties of the FM 4310i harness between the Speaker and the Connector. This will allow the Speaker to be situated in a different position to the rest of the harness.
 - 4.6.3. The Speaker can be tied with cable ties to other sub-structures in the vehicle to ensure the orientation remains constant. Use extreme care if tying to harnesses or wires using cable ties as damage or latent damage can easily occur if cable ties are pulled too tight.
 - 4.6.4. Do not mount the speaker in a visible position as the design is not suitable for aesthetic surfaces.

5. Finishing off the Installation

- 5.1. Reroute original wires and harnesses back into their original positions once the electrical installation is complete. Also refit all the panels removed using all the original mounting screws.
- 5.2. The FM 4310i installation should now be fully tested. This is done by using the Self-test mode. Put the unit in Self-test mode by pushing the Shift (up arrow) button followed by the OK button on the Remote Control Unit. The following steps should then be followed:
 - 5.2.1. Push the OK button when prompted to start the self-test.
 - 5.2.2. Allow all the Voice Prompts to play to the end.
 - 5.2.3. Make a note of the Software Version Number (optional) and any GSM error messages you may receive.
 - 5.2.4. Please push the Alert (orange) button. This will send a test confirmation message to the FM Protector database. After doing so, please wait until the voice prompt, 'Event post successful' is heard before

- continuing. (If you are already a registered user and the vehicle is registered on the web site, you will also receive a SMS message on your mobile phone with the system test details of the unit, but this is not the case during an initial installation)
- 5.2.5. Now, please push the Info button. This sends a unit registration message to the FM Protector database. Do this after completing the step above.
 - 5.2.6. Close all the doors and ensure that the GSM & GPS performance remains within the minimum specified performance levels as described above.
 - 5.2.7. Deactivate the Self-test mode by pushing the Shift (up arrow) button followed by the OK button. The Voice Prompt should confirm that the Self-test mode has been terminated.
 - 5.3. Switch the FM 4310i unit from Diagnostic Mode to Silent Mode by pushing the Shift (up arrow) button followed by the Alert (orange) button repeatedly until 'Voice, Diagnostic Disabled' is heard.
 - 5.4. The Silent Mode will mute all Voice Prompts during normal usage of the service by the end-user.
 - 5.5. Confirm the Silent Mode is selected by pushing Shift (up arrow) & Green buttons and Shift (up arrow) & Red buttons. Neither combination should result in any Voice Prompt other than a 'Plop' when the Shift (up arrow) button is pressed (If the user is going to use driver or trip ID, the unit should be put into Voice Mode)
 - 5.6. Now you are ready to complete the unit activation and online registration process.

The Online Registration Process

The Dealer/Installer should assist the new user with the initial registration on the Website. The registration process is intuitive and easy to follow, provided the FM 4310i unit was correctly installed.

As an overview, Steps A and B below are usually done at the same time and should ideally happen under the supervision of the Dealer/Installer. Step C can be completed later by the new user. These steps are explained in more detail further down.

A: Register

Register the user and/or vehicle on the website. (If it is an additional vehicle, the user does not have to register again – only register the new vehicle)

B: Update Profiles & Settings

Update the vehicle profile and event settings. This is an optional step during the initial installation and can be done by the user at a later stage. However, it is strongly recommended that the Dealer/Installer assist the new user with this process as a mistake or omission may make the unit behave in an unexpected manner.

C: First Time Login

When the new user first logs in after the registration process, he/she can change their password to avoid the Dealer/Installer from being able to log in to their system.

Let's now look at the process in brief for the two different scenarios, namely registering a new user & vehicle or simply adding a new vehicle to an existing user's account.

Depending on whether you're a new user or an existing user intending to add a vehicle to the site, please follow the either **Step 1** (Registering a new user with a new vehicle (new FM 4310i unit)) or **Step 2** (Existing user adding an additional vehicle (additional FM 4310i unit)) below.

1. Registering a new user with a new vehicle (new FM 4310i unit) (explained in more detail further on)
 - 1.1. Log onto the relative 4310i website. Either www.x-drive.co.za or <http://www.fm-protector.com>, (if you are unsure which URL to access, please contact your dealer or the MiX Telematics Helpline) and select your region. Select 'Click here to register as a new user' on the Home Page, just under the login box.
 - 1.2. Fill in the IMEI number and Registration Pin as shown on the 'Important Numbers' labels in the packaging, that accompanied your unit.
 - 1.3. Fill in the User Details as requested. Note the following important points:
 - 1.3.1. The User Name can never be changed again. Select a sensible name such as the first name plus the first letter of the surname. Eg. (JohnD)
 - 1.3.2. The e-mail address must be entered **correctly** as this is where the registration confirmation e-mail will be sent.
 - 1.3.3. The mobile phone number asked for will be used as the default for sending system SMS messages. Ideally choose a mobile phone that is available during the registration process and can be used on site where the installation is taking place, to verify the success of the self-test procedure described above.
 - 1.3.4. Click 'Next' when done
 - 1.4. Add the Vehicle Preferences as requested. Click 'Next' when done. The explanations on the right hand side will guide you through each item, should you not be sure of what each entry means.
 - 1.5. Update the Event Settings to the new user preferences. Ensure that all Event Pages are completed by carefully completing each step of the Registration wizard. By selecting each event on the left hand side menu, the corresponding details page will load on the right hand side. Please ensure that all relevant events are completed – along with the preferred actions that the user will want to take for these events, before moving onto the next one.
 - 1.6. The Top-up step can be skipped by clicking 'Next'. However, the new user should be asked to top-up as soon as possible.

If you accidentally terminate the registration process before it is properly completed, you may attempt to register a second time. If a message is displayed indicating that the unit is already registered, you will have to wait for the confirmation e-mail and complete the process at a later stage.

2. Existing user adding an additional vehicle (additional FM 4310i unit)
 - 2.1. The user is to please log in using their existing username and password.
 - 2.2. On the 'Vehicle Tracking' page, select 'Add a Vehicle' at the left bottom of the navigation options
 - 2.3. Follow the on-screen prompts and complete the process in a similar manner to that described above.

Final Checks

Before the new user leaves the installer's premises, the following final checks are recommended:

1. Ensure that the vehicle is parked where it can acquire GPS lock .
2. Send an 'Information Request' SMS message to the vehicle from any mobile phone in the manner described in 4.2 below. The FM 4310i unit should reply within a minute or two. (It may sometimes take longer if the GSM network is busy or has problems)
3. Push the Alert (orange) button on the Remote Control Unit. The FM 4310i unit should send an alert SMS to the registered user's specified mobile phone/s and/or an e-mail addresses within a minute or two.
4. Remind the user to top-up soon if they have not already done so. The factory-loaded FM Protector Credits will only be sufficient for a few transactions.

7

Updated 10 November 2009

Interacting with FM Protector on a Mobile Phone (Using SMS messages)

Information Request

To request the current location, speed and direction of travel of your vehicle, send an SMS message from any mobile phone to your FM 4310i unit's phone number in the following format:

```
<Unit access password>
```

E.g. WAMW (factory default setting)

A reply SMS message will be sent to the mobile phone that the information request was sent from. In addition to this, an e-mail message will be sent to the FM 4310i unit owner informing him/her about the information request.

Airtime Top-up

To top-up the prepaid airtime in your FM 4310i unit, purchase a top-up voucher from your airtime service provider or retail outlet, then send an SMS message from any mobile phone to your unit's phone number in the following format:

```
<unit access password> 12 <prepaid voucher PIN>
```

E.g. WAMW 12 123456789012

An SMS and e-mail message will be sent to the unit owner informing him/her about the airtime top-up.

Note: A reply is sent to the unit owner and not to the mobile phone that sent the original SMS message.

System Test

To test your FM 4310i unit, send an SMS message from any mobile phone to your unit's phone number in the following format:

```
<unit access password> 4
```

E.g. WAMW 4

An SMS and e-mail message will be sent to the unit owner containing the system test results.

Note: A reply is sent to the unit owner and not to the mobile phone that sent the original SMS message.

Set Odometer

To set your FM 4310i unit's odometer reading, send an SMS message from any mobile phone to your unit's phone number in the following format:

```
< access password> 5 <odometer reading in km>
```

E.g. WAMW 5 100213.5

An SMS and e-mail message will be sent to the unit owner informing him/her that the odometer has been updated.

Note: A reply is sent to the unit owner and not to the mobile phone that sent the original SMS message.

Set FM 4310i Unit Access Password

To set your FM 4310i unit's access password, send an SMS message from any mobile phone to your unit's phone number in the following format:

<unit access password> 6 <new unit access password>

E.g. WAMW 6 mypassword

An SMS and e-mail message will be sent to the unit owner informing him/her that the access password has been changed.

Note: A reply is sent to the unit owner and not to the mobile phone that sent the original SMS message.

Pair New Remote Control Unit

To pair an additional remote control unit with your FM 4310i unit, send an SMS message from any mobile phone to your unit's phone number in the following format:

<unit access password> 14

E.g. WAMW 14

If you have lost your remote control unit, use the 'Un-pair All Remote Control Units' message documented below instead of this function.

Caution: When the SMS message is received by your unit, it will enter remote pairing mode so that you can pair a new remote control unit with it. Ensure that you go to your unit and pair the new remote control unit with it immediately.

An SMS and e-mail message will be sent to the unit owner informing him/her that a new remote control unit has been paired.

Note: A reply is sent to the unit owner and not to the mobile phone that sent the original SMS message.

Un-pair All Remote Control Units

This function should only be used if you lose your FM Protector remote control unit!

To un-pair all remote control units from your FM 4310i unit, send an SMS message from any mobile phone to your unit's phone number in the following format:

<unit access password> 16

E.g. WAMW 16

Caution: When the SMS message is received by your unit, it will enter remote pairing mode so that you can pair a new remote control unit with it. Ensure that you go to your unit and pair the new remote control unit with it immediately.

An SMS and e-mail message will be sent to the unit owner informing him/her that a new remote control unit has been paired.

Note: A reply is sent to the unit owner and not to the mobile phone that sent the original SMS message.

Installation FAQs

Is the FM 4310i unit protected against reverse polarity?

Yes.

What are the other connector pin-outs on the FM 4310i unit?

These are reserved for a whole range of exciting accessories and functionality eg. connecting to central locking system, alarm systems and sensors, etc.

What is the purpose of the in-line harness fuse?

The fuse provides protection in the event of an installation accidentally being done on the wrong side of the vehicle fuse system. It protects against potential short circuits in the FM 4310i harness and protects the unit from huge current surges.

Can the unit work in 24V vehicles?

Not in its current form. It was specifically designed for 12V systems only.

How does ambient temperature affect the FM 4310i unit?

As a reliability precaution, the FM 4310i unit will shut down when it reaches an internal temperature greater than 70 degrees Celsius. It will automatically restart once the unit cools down again. The unit also stops charging the internal backup battery above 45 degrees Celsius, but this should be of no consequence as the unit runs off the car battery at all times and keeps its internal battery fully charged automatically.

What is the current rating of the inline harness fuse?

5 Amps

How do I reset the FM 4310i unit if it is in an uncertain state?

You can reset the unit by pushing the Shift (up arrow) button twice, followed by the Alert (orange) button.

How do I pair a new Remote Control Unit with the FM 4310i unit?

You can do this from the Web Site under the 'Other Settings' tab of the 'Manage Vehicle Profile' page or using an SMS message as described above.

How much current does the FM 4310i unit draw in 'Sleep Mode'?

Approximately 25mA

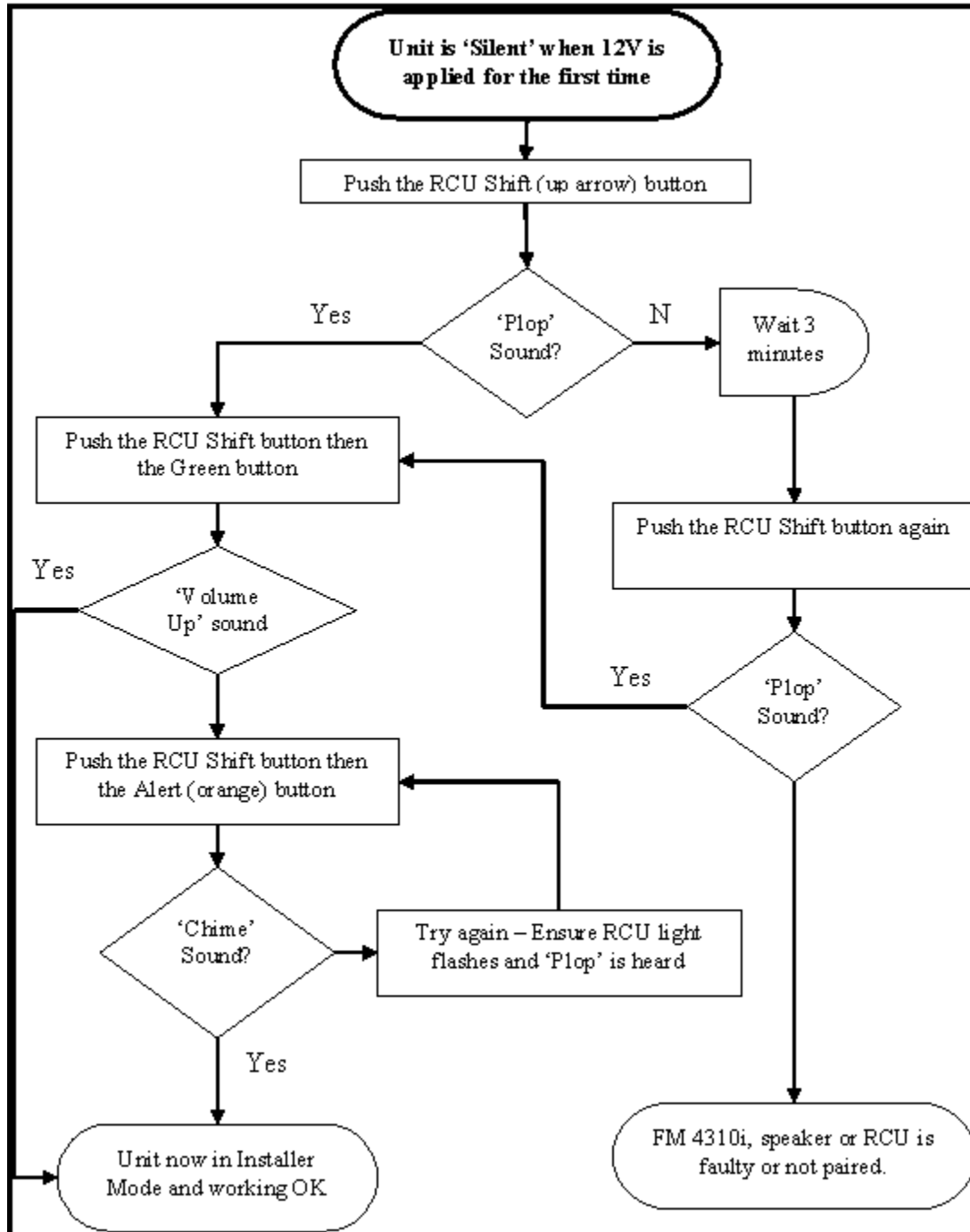
Are there any user serviceable parts inside the FM 4310i casing?

No.

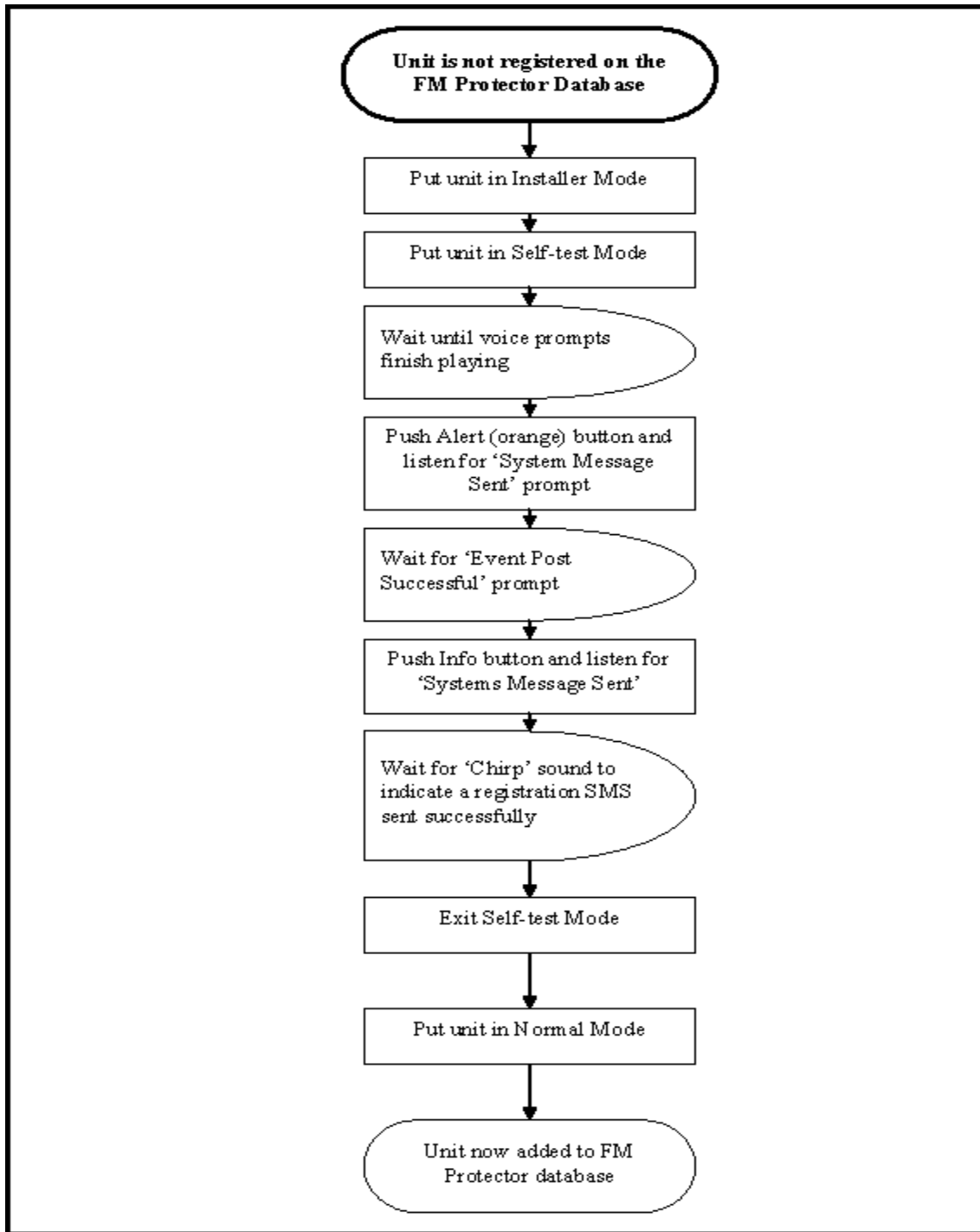
How long will the back-up battery last if the car battery is disconnected?

More than 4 hours.

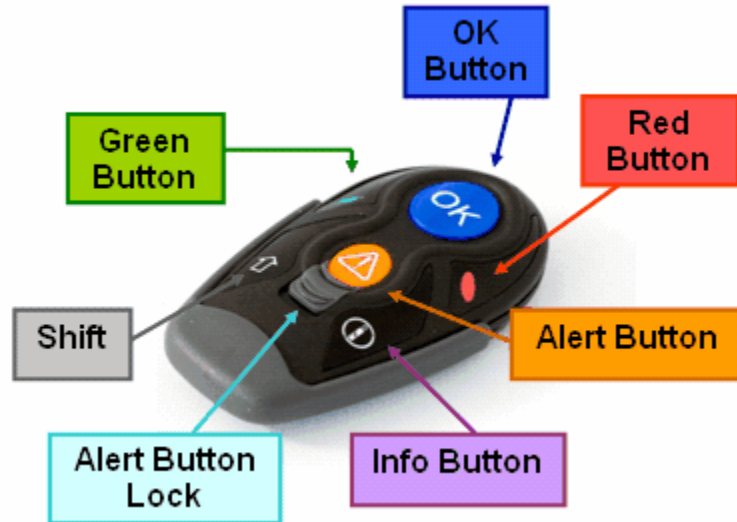
Trouble-shoot chart 1



Trouble-shoot chart 2.



4310i Remote Control Operation



| BUTTON COMBINATION | IN TRIP MODE | OUT OF TRIP MODE | VOICE PROMPT | ACTION |
|--------------------|--------------|------------------|--------------|--|
| SILENCE | | | | |
| SHIFT | ✓ | ✓ | "Plop" | Enters SHIFT Mode for 3 seconds |
| GREEN | ✓ | ✓ | | Disarms the security system (if security system installed and enabled) |
| GREEN | ✓ | ✓ | | Unlocks doors (if central locking system installed and enabled) |
| OK | ✓ | ✓ | | Disables external ultrasonic or microwave sensor if pressed within 30 seconds of arming security system (if security system installed and enabled) |
| RED | ✓ | ✓ | | Arms the security system (if security system installed and enabled) |
| RED | ✓ | ✓ | | Locks doors (if central locking system installed and enabled) |

| | | | | |
|--------------------|---|---|------------------------------------|--|
| ALERT | ✓ | ✓ | | Sends Alert SMS and e-mail messages to specified people |
| VOICE | | | | |
| SHIFT | ✓ | ✓ | "Plop" | Enters SHIFT Mode for 3 seconds |
| GREEN | ✓ | ✓ | "Your unit is disarmed" | Disarms the security system (if security system installed and enabled) |
| GREEN | ✓ | ✓ | | Unlocks doors (if central locking system installed and enabled) |
| SHIFT, GREEN | ✓ | ✓ | "Volume up" | Increases the volume |
| OK | ✓ | ✓ | "Ultrasonic or microwave disabled" | Disables external ultrasonic or microwave sensor if pressed within 30 seconds of arming security system (if security system installed and enabled) |
| SHIFT, OK | ✗ | ✓ | "The self test has been initiated" | Enters self-test mode. Follow the audible instructions to test the unit |
| RED | ✓ | ✓ | "Your unit is armed" | Arms the security system (if security system installed and enabled) |
| RED | ✓ | ✓ | | Locks doors (if central locking system installed and enabled) |
| SHIFT, RED | ✓ | ✓ | "Volume down" | Decreases the volume |
| INFO | ✓ | ✓ | Previous voice prompt | Repeats previous voice prompt |
| SHIFT, INFO | ✓ | ✓ | "The time is ..." | Says the current time |
| ALERT | ✓ | ✓ | "Plop" | Sends Alert SMS and e-mail messages to specified people |
| SHIFT, ALERT | ✓ | ✓ | "Diagnostic enabled" | Switches to "Diagnostics Enabled" mode |
| DIAGNOSTICS | | | | |
| SHIFT | ✓ | ✓ | "Plop" | Enters SHIFT Mode for 3 seconds |
| GREEN | ✓ | ✓ | "Your unit is disarmed" | Disarms the security system (if security system installed and enabled) |

| | | | | |
|---------------------|---|---|---|--|
| GREEN | ✓ | ✓ | | Unlocks doors (if central locking system installed and enabled) |
| SHIFT, GREEN | ✓ | ✓ | "Volume up" | Increases the volume |
| SHIFT, SHIFT, GREEN | ✓ | ✓ | "Satellites visible x, GSM signal strength y" | Describes the number of satellites visible to the unit and the unit's GSM signal quality as a percentage |
| OK | ✓ | ✓ | "Ultrasonic or microwave disabled" | Disables external ultrasonic or microwave sensor if pressed within 30 seconds of arming security system (if security system installed and enabled) |
| SHIFT, OK | ✗ | ✓ | "The self test has been initiated ..." | Enters self-test mode. Follow the audible instructions to test the unit |
| SHIFT, OK | ✗ | ✓ | Level 1 enabled" | Enters deep sleep mode if pressed within 30 seconds of arming the security system. |
| RED | ✓ | ✓ | "Your unit is armed" | Arms the security system (if security system installed and enabled) |
| RED | ✓ | ✓ | | Locks doors (if central locking system installed and enabled) |
| SHIFT, RED | ✓ | ✓ | "Volume down" | Decreases the volume |
| SHIFT, SHIFT, RED | ✓ | ✓ | "Vehicle battery x, unit battery y, unit temperature z" | Describes the vehicle battery voltage, unit battery voltage and unit internal temperature in degrees Celsius |
| INFO | ✓ | ✓ | Previous voice prompt | Repeats previous voice prompt |
| SHIFT, INFO | ✓ | ✓ | "Boot error ..." | Describes the last boot error |
| SHIFT, SHIFT, INFO | ✓ | ✓ | "Odometer x, speed y, accelerometer level z" | Describes the unit trip odometer reading in km, the current speed in km/h and the current resultant accelerometer level in Gx10 |
| ALERT | ✓ | ✓ | "Plop, alert event" | Sends Alert SMS and e-mail messages to specified people |
| SHIFT, ALERT | ✓ | ✓ | "Voice, diagnostic disabled" | Switches to "Voice and Diagnostics Disabled" mode |